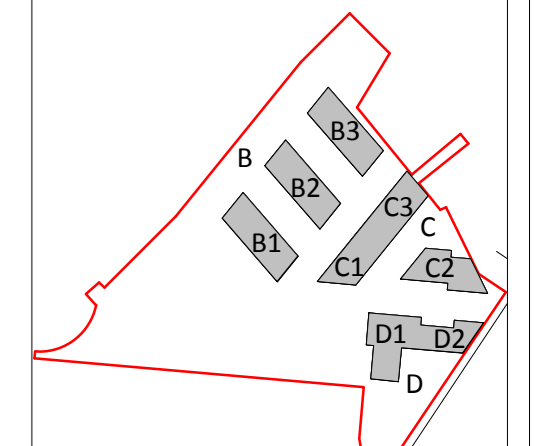
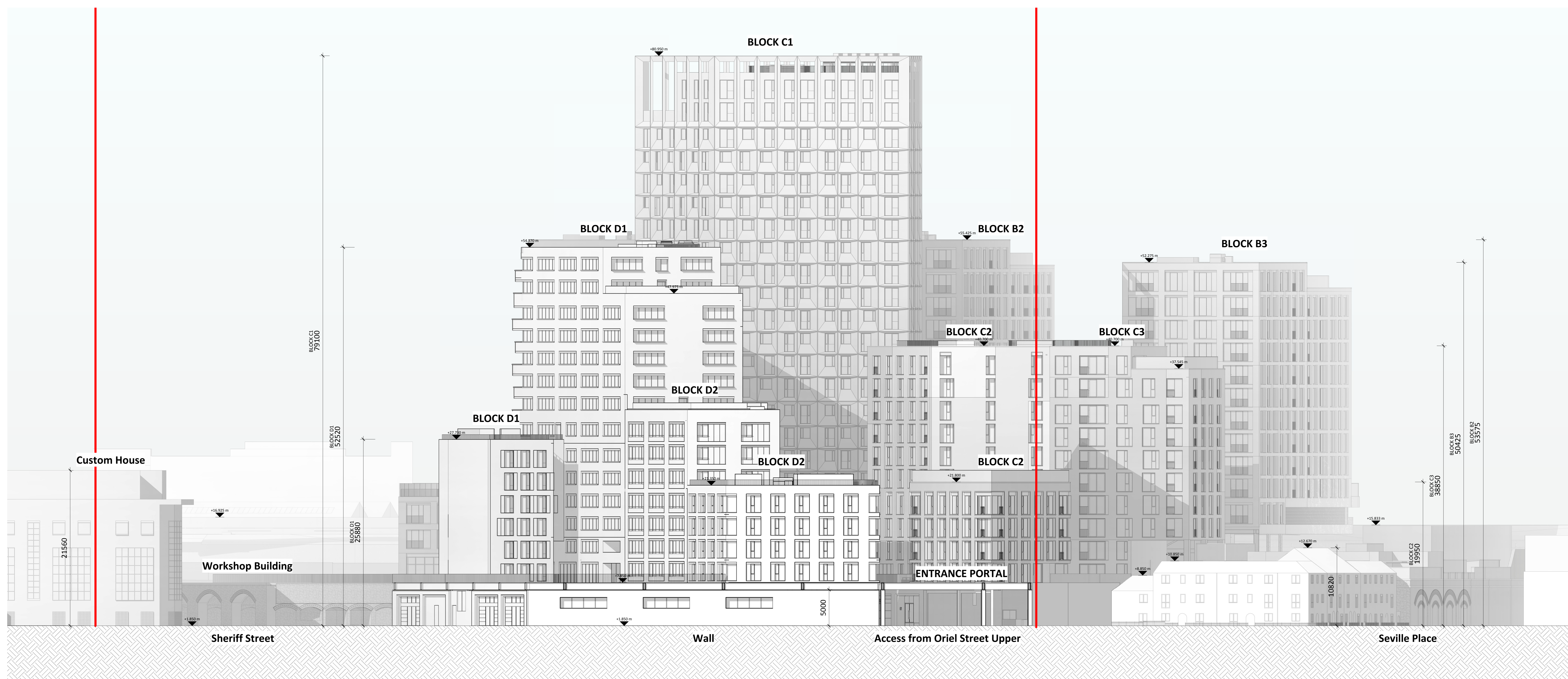


All dimensions to be checked on site. Figure dimensions take precedence over scaled dimensions. Any errors or discrepancies to be reported to the Architect. This drawing may not be used or modified by the recipient.

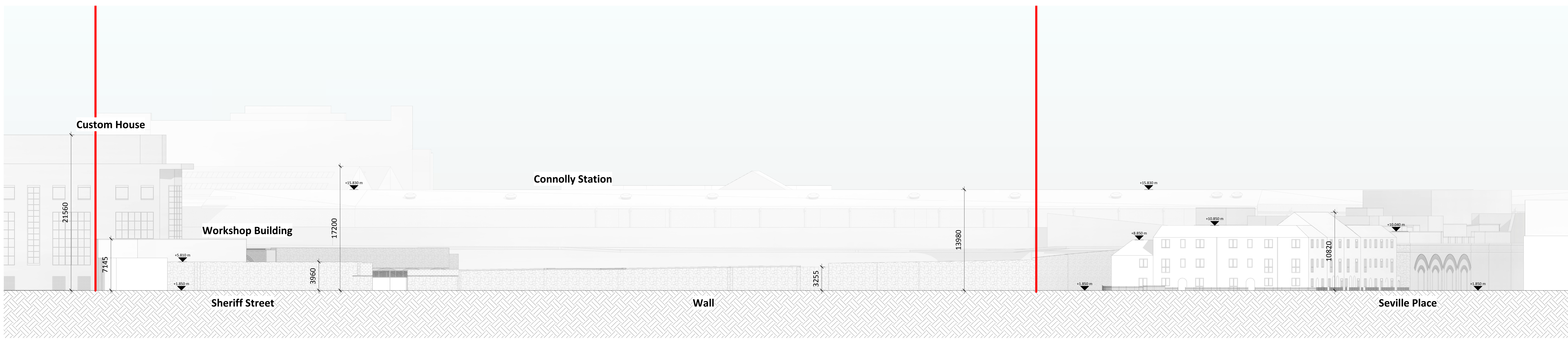
Copyright and ownership of this drawing is vested in RKD Architects, whose prior written consent is required for sale, reproduction or for publication in any form. All rights reserved by the law of copyright and by international copyright conventions are reserved to RKD Architects and may be protected by court proceedings for damages and/or injunction and costs. RKD Architects' Quality Management Systems are certified to ISO 9001:2015.

Notes:

- Site Boundary
- All levels shown are to the Irish Transverse Meridian (T.M.) and are displayed in meters (m). All levels shown relate to the Mean Head datum. All dimensions shown in millimeters (mm). Symbols indicate top of floor level and relates to Mean Head datum.

1 Oriel Upper Street Elevation - Proposed
1 : 200



2 Oriel Street Upper Elevation - Existing
1 : 200

Rev.	Date	Description
A	OCT 2019	Issued for Planning Application Submission

STATUS: **PLANNING**

PROJECT: The Connolly Quarter

PROJECT1: Lands to the Rear of Connolly Station, Dublin 1

DWG TITLE: SITE - ORIEL STREET UPPER ELEVATION

DWG NO: 18135-ARROW-00-ZZ-DR-A-1323

REV: A PROJECT NO: 18135 SCALE: 1:200

DATE: JUN 19 DRY: ILA CHK: UR

RKD
Riverside, Dublin 1
Tel: +353 1 455 0880
www.rkd.ie

ARROW
Newry, Co. Down
Tel: +353 30 200 0000
www.arrow.ie